

LKTOP

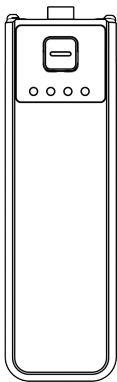
Osmo Pocket 3续航手柄

Osmo Pocket 3 Battery Handle

User Manual

用户手册

V2.1 2025.08



免责声明

感谢您购买LKTOP Osmo Pocket 3 续航手柄(以下简称“续航手柄”)。在使用续航手柄之前,请仔细阅读本声明,一旦使用本产品,即被视为对本声明全部内容的认可和接受。请严格遵守本说明使用该产品,并务必重视注意事项。因用户使用不当续航手柄而造成的直接或者间接损失与伤害,立刻飞概不负责。

LKTOP为立刻飞授权使用。本文出现的产品名称、品牌等,均为其所属公司的商标或注册商标。本产品及手册为立刻飞版权所有。未经许可,不得以任何形式复制翻印。使用本产品及手册不会追究专利责任。本文档及本产品所有的相关文档最终解释权归立刻飞所有。

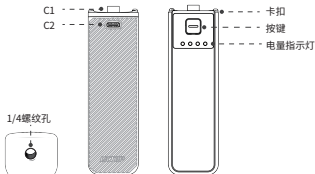
关于不同语言版本的免责声明可能存在差异,中国以中文版为准,其他地区以英文版为准。

注意事项

- 使用本产品之前,请仔细阅读并遵循本文及本产品相关的所有安全与合规操作指引。
- 使用续航手柄时注意绝缘及防火。禁止机械撞击、碾压或抛掷续航手柄。
- 产品内部采用锂离子电池,初次使用或长期存储后,应先充满电再使用。
- 续航手柄应远离热源、高压、水、可燃性气体、腐蚀性剂等危险物品。
- 若遇火警,请正确使用干粉灭火器进行灭火,使用液体类灭火器可能会有触电危险。
- 消费者若使用电源适配器充电,则应购买配套使用获得CCC认证并满足标准的电源适配器。
- 保持续航手柄内部干燥,切勿进入水、油等液体。
- 充电时,请远离可燃物,切勿将续航手柄置于地毯上充电。
- 确保将续航手柄接口对准Osmo Pocket 3接口后轻按插入,否则可能导致续航手柄损坏。
- 确保续航手柄卡扣完全嵌入相机底部卡槽内,未完全嵌入请勿使用。
- 务必于合适的环境温度使用续航手柄(建议0°C至40°C)。
- 移动或搬运续航手柄时,不要拉扯充电器电源线。
- 使用前,请确保Osmo Pocket 3接口、续航手柄接口表面干燥无水,再连接充电器。
- 续航手柄不防水,浸水后请勿使用。
- 禁止以任何方式拆解或损坏续航手柄。

产品介绍

该产品是专为Osmo Pocket 3设计的高档续航手柄,采用了21700钢壳锂离子电芯,具备5000mAh的大容量,为Osmo Pocket 3提供了稳定的电力供应。实现了边拍摄边充电的功能,显著提升了Osmo Pocket 3的使用体验和续航能力。此续航手柄的握持感舒适,让用户在长时间使用中仍能保持舒适。底部设置的1/4螺纹孔便于连接支架,拓展应用场景。



C1接口: 用于Osmo Pocket 3口袋云台相机供电

C2接口:

- ① 使用适配器给Osmo Pocket 3续航手柄快速充电;
- ② 给Osmo Pocket 3口袋云台相机或者MIC设备等快速充电;

卡扣: 固定Osmo Pocket 3

按键:

短按一下:LED灯显示当前电量,显示时间为30秒
短按两下:LED灯熄灭,关闭充电
解锁卡扣

1/4螺纹孔: 连接支架,扩展应用场景

电量查询

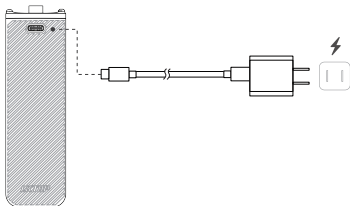
- 1.续航手柄正常使用时,LED显示为实时电量;
- 2.续航手柄休眠状态下,短按一下按键,LED显示为当前电量;

LED1	LED2	LED3	LED4	剩余电量
●	●	●	●	76% - 100%
●	●	●		51% - 75%
●	●			26% - 50%
●				0% - 25%

为LKTOP Osmo Pocket 3 续航手柄充电

LKTOP Osmo Pocket 3 续航手柄可使用支持PD协议的充电器, 通过续航手柄背部的USB-C2接口进行充电, 最大充电功率为18W。

以LKTOP 30W USB-C充电器充电展示

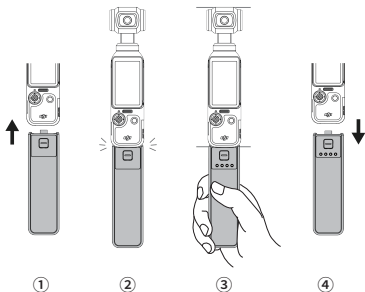


- ⚠️ 1. 推荐使用DJI 30W USB-C 充电器、LKTOP 30W USB-C 充电器、DJI 65W 便携充电器、LKTOP 65W便携充电器；
2. 充电时, 请勿用物体盖住续航手柄, 确保续航手柄可以正常散热, 续航手柄发热属于正常现象, 不会影响电池的使用寿命和性能；
3. 实际输出容量会受到环境和设备影响；
4. 建议在25°C以内充电, 当室内环境较高, 导致内部电芯温度过高, 会触发温度保护功能, 4个LED灯会一起闪烁, 停止充电。

为Osmo Pocket 3 充电

·边充电边拍

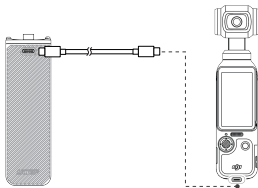
1. 将续航手柄插入相机底部的USB-C接口。
2. 要听到“咔咔”两声, 确保续航手柄卡扣完全嵌入相机底部卡槽, 若未完全嵌入, 则需用手拨动未嵌入侧的卡扣。
3. 相机开始充电, 续航手柄电量指示灯显示当前电量。USB-C1接口最大输出功率10W, 确保相机边充电边拍不掉电。
4. 使用完毕, 按住按键打开两侧卡扣同时向下拔出。



⚠ 确保续航手柄卡扣完全嵌入相机底部卡槽内,未完全嵌入请勿使用。

·快速充电

USB-C2接口给Osmo Pocket 3支持最大20W功率进行快速充电,且可以支持22.5W功率。



产品规格参数

产品名称:	LKTOP Osmo Pocket 3 续航手柄
产品型号:	PC430
适配产品:	DJI Osmo Pocket 3
电芯类型:	21700锂离子电池
电芯容量:	5000mAh 3.65V/18.25Wh
输入:	USB-C2: 5V \leq 3A, 9V \leq 2A, 12V \leq 1.5A 18W Max
输出:	USB-C1: 5V \leq 2A 10W Max USB-C2: 5V \leq 3A, 9V \leq 2A, 12V \leq 1.67A 20W Max USB-C1+C2: 5V \leq 3A 15W Max
使用环境温度:	0°C至40°C
电芯充电温度:	5°C至45°C
产品尺寸:	110 x 33.5 x 28mm
包装尺寸:	155 x 70 x 35mm
产品重量:	约 120g (不包含线材重量)
保护功能:	温度保护、短路保护、输入过压保护、输入过流保护、输出过压保护、输出过流保护、电池过充保护、电池过放保护

PS:本页面所示重量/尺寸信息均为手工测量,有一定误差,属于正常现象。

Disclaimers

Thank you for purchasing LKTOP Osmo Pocket 3 Battery Handle (hereinafter referred to as "Battery Handle"). Before using the Battery Handle, please read this statement carefully. Once using this product, it is deemed to be an acknowledgement and acceptance of all the contents of this statement. Please strictly follow these instructions when using this product, and be sure to pay attention to the precautions. LKF is not responsible for any direct or indirect losses or injuries caused by improper use of Battery Handle by users.

LKTOP is authorized for use by LKF Co., Ltd.(hereinafter referred to as the "LKF"). The product names and brands mentioned in this article are trademarks or registered trademarks of their respective companies. This product and manual are copyrighted by LKF. Without permission, no reproduction or copying is allowed in any form. The use of this product and manual will not be subject to patent liability, and the final interpretation rights of this document and all related documents of this product belong to LKF.

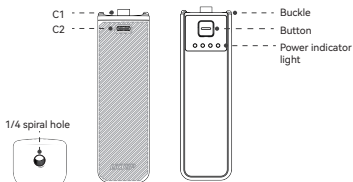
There may be differences in disclaimers for different language versions. The Chinese version shall prevail in China, and the English version shall prevail in other regions.

Product Usage Precautions

- Before using this product, please carefully read and follow all safety and compliance operating instructions related to this article and this product.
- Pay attention to insulation and fire prevention when using the Battery Handle. Mechanical impact, crushing, or throwing of the battery handle is prohibited.
- The product uses lithium-ion batteries internally. After initial use or long-term storage, it should be fully charged before use.
- The Battery Handle should be kept away from dangerous items such as heat sources, high pressure, water, combustible gases, and corrosive agents.
- In case of a fire alarm, please use dry powder fire extinguishers correctly to extinguish the fire. Using liquid fire extinguishers may pose a risk of electric shock.
- If consumers use a power adapter for charging, they should purchase a matching power adapter that has obtained CCC certification and meets the standards.
- Keep the interior of the battery handle dry and do not allow water, oil, or other liquids to enter.
- When charging, please stay away from combustible materials and do not place the battery handle on the carpet for charging.
- Make sure to align the battery handle interface with the Osmo Pocket 3 interface and gently insert it, otherwise it may cause damage to the battery handle.
- Ensure that the battery handle buckle is fully inserted into the bottom slot of the camera. Do not use it if it is not fully inserted.
- Be sure to use the battery handle at the appropriate ambient temperature (recommended 0 °C to 40 °C).
- When moving or transporting the battery handle, do not pull or tug on the charger power cord.
- Before use, please ensure that the surface of the Osmo Pocket 3 interface and the battery handle interface is dry and free of water, and then connect the charger.
- The battery handle is not waterproof, please do not use it after soaking in water.
- Do not disassemble or damage the battery handle in any way.

Product Introduction

This product is a high-end endurance controller designed specifically for the Osmo Pocket 3. It uses 21700 steel shell lithium-ion batteries with a large capacity of 5000mAh, providing stable power supply for the Osmo Pocket 3. The function of charging while shooting has been implemented, significantly improving the user experience and battery life of Osmo Pocket 3. The grip of this battery controller is comfortable, allowing users to maintain comfort even after prolonged use. The 1/4 threaded hole set at the bottom is convenient for connecting brackets and expanding application scenarios.



C1 Interface: Powered for Osmo Pocket 3 Gimbal Camera

C2:Interface:

- ① Rapidly charges the Osmo Pocket 3 Grip via an adapter.
- ② Provides fast charging for the Osmo Pocket 3 Gimbal Camera or MIC receiver.

Buckle: Fixed Osmo Pocket3

Button:

- Short press once to check the current battery level;
- Short press twice to turn off charging;
- Short Press Twice: The LED turns off and charging is disabled.
- Unlock the buckle

1/4 threaded hole: Connecting brackets to expand application scenarios

Battery Level Display

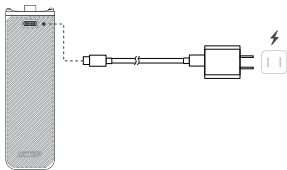
1. When the Battery Handle is used normally, the LED displays the real-time battery level;
2. When the Battery Handle is in sleep mode, press the button briefly and the LED will display the current battery level;

LED1	LED2	LED3	LED4	Remaining battery capacity
●	●	●	●	76% - 100%
●	●	●		51% - 75%
●	●			26% - 50%
●				0% - 25%

Charging the LKTOP Osmo Pocket 3 Battery Handle

The LKTOP Osmo Pocket 3 battery handle can be charged using a charger that supports PD protocol, through the USB-C2 interface on the back of the handle, with a maximum charging power of 18W.

Charging demonstration with LKTOP 30W USB-C Charger:



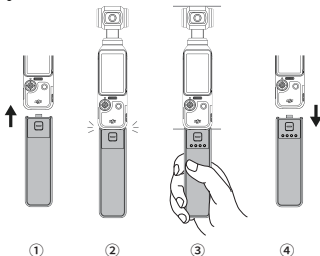
- ⚠** 1. Recommended to use DJI 30W USB-C Charger, LKTOP 30W USB-C Charger, DJI 65W Portable Charger, LKTOP 65W Portable Charger;
2. When charging, do not cover the battery handle with objects to ensure that the battery handle can dissipate heat normally. Heating the battery handle is a normal phenomenon and will not affect the battery's lifespan and performance;
3. The actual output capacity will be affected by the environment and equipment;
4. It is recommended to charge within 25 ° C. When the indoor environment is high and the internal cell temperature is too high, the temperature protection function will be triggered, and the four LED lights will flash together to stop charging.

Charging for Osmo Pocket 3

· Charging and filming at the same time

1. Insert the battery handle into the USB-C port at the bottom of the camera.
2. To hear a "click click" sound, make sure the battery handle buckle is fully inserted into the bottom slot of the camera. If it is not fully inserted, you need to manually move the buckle on the side that is not embedded.

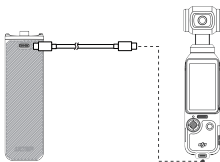
- The camera starts charging, and the battery indicator light on the battery handle displays the current battery level. The USB-C1 interface has a maximum output power of 10W, ensuring that the camera does not lose power while charging and shooting.
- After use, press and hold the button to open the buckles on both sides while pulling them down.



⚠ Ensure that the battery handle buckle is fully inserted into the bottom slot of the camera. Do not use it if it is not fully inserted.

·Fast charging

The USB-C2 interface supports fast charging with a maximum power of 20W for Osmo Pocket 3, and can also support 22.5W power.



Product Specifications

Product Name:	LKTOP Osmo Pocket 3 Battery Handle
Product Model:	PC430
Compatible Product:	DJI Osmo Pocket 3
Cell Type:	21700 Lithium ion battery
Cell Capacity::	5000mAh 3.65V/18.25Wh
Input:	USB-C2: 5V=3A , 9V=2A , 12V=1.5A 18W Max
Output:	USB-C1: 5V=2A 10W Max USB-C2: 5V=3A , 9V=2A , 12V=1.67A 20W Max USB-C1+C2: 5V=3A 15W Max
Operating Ambient Temperature:	0 °C to 40 °C
Charging temperature of battery cells:	5 °C to 45 °C
Product Size:	110 x 33.5 x 28mm
Packaging Size:	155 x 70 x 35mm
Product Weight:	About 120g (excluding cable weight)
Protection Function:	Temperature protection, Short circuit protection, Input overvoltage protection, Input overcurrent protection, Output overvoltage protection, Output overcurrent protection, Battery overcharge protection, Battery overdischarge protection

PS: The weight/size information shown on this page is manually measured with some error, which is a normal phenomenon.

Compliance Information

FCC Statement

This device complies with part 15 of the FCC Rules. Operation is subject to the following two conditions:

- (1) This device may not cause harmful interference;
- (2) This device must accept any interference received, including interference that may cause undesired operation.

Warning: Changes or modifications not expressly approved by the party responsible for compliance could void the user's authority to operate the equipment.

Note:

This equipment has been tested and found to comply with the limits for a Class B digital device, pursuant to part 15 of the FCC Rules. These limits are designed to provide reasonable protection against harmful interference in a residential installation. This equipment generates, uses and can radiate radio frequency energy and, if not installed and used in accordance with the instructions, may cause harmful interference to radio communications. However, there is no guarantee that interference will not occur in a particular installation. If this equipment does cause harmful interference to radio or television reception, which can be determined by turning the equipment off and on, the user is encouraged to try to correct the interference by one or more of the following measures:

- Reorient or relocate the receiving antenna.
- Increase the separation between the equipment and receiver.
- Connect the equipment into an outlet on a circuit different from that to which the receiver is connected.
- Consult the dealer or an experienced radio/TV technician for help.

Manufacturer : Shenzhen Lktop Technology Co., Ltd.

Manufacturer Add : Room 410, Baolu Qiwei Business Center, No. 195 Chuangye 2nd Road, District 28, Dalang Community, Xin'an Street Bao'an District, Shenzhen , China.

Tel : +86-0755-29417665

Email : service@lktop.cn

WE ARE HERE FOR YOU

在线技术支持



Scan Wechat
Obtain Technical Support
微信扫一扫 获取技术支持



Scan Wechat
Follow LKTOP Official Account
微信扫一扫 关注LKTOP公众号



Scan QR code
Visit LKTOP Official Website
扫描二维码 访问LKTOP官方网站

This manual is subject to updates without prior notice.

本手册如有更新，恕不另行通知。

You can check the latest version on the LKTOP official website

您可以在LKTOP官方网站查询最新版本

<https://www.lktop.cn>

If you have any questions or suggestions about the manual,
please contact us via the following email:

如果您对说明书有任何疑问或建议，请通过以下电子邮箱联系我们：

service@lktop.cn

LKTOP is a trademark of LKF.

LKTOP是立刻飞的商标

Copyright © 2025 立可拓版权所有